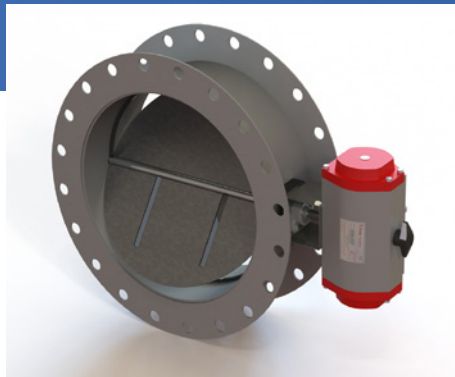


# INDUSTRIAL DAMPERS AND ACCESSORIES FOR DEMANDING CONDITIONS

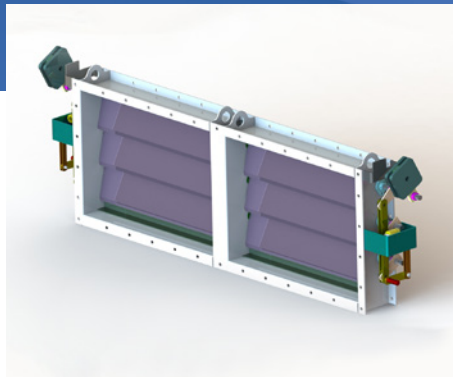


## BUTTERFLY DAMPERS

Sizes from 6" to 120", Butterfly Dampers can provide both isolation and control. Offered with manual operation, pneumatic or electric actuators. Temperature ranges from ambient to 1500°F standard or options for up to 2200°F.

Options Include:

- Shutoff options from 90% to 99%
- Stainless or carbon steel construction
- Spring returns, battery backups and controls available with actuators



## LOUVER DAMPERS

Sizes from 14" to 120" in square, rectangular or round configurations, Louver Dampers are commonly used for modulation or isolation of flow. Our Louver Dampers are available in parallel or opposed blade configurations with process temperatures up to 1500F.

Options Include:

- Shutoff options from 90% to 99%
- Stainless or carbon steel construction
- Manual, pneumatic or electric actuators
- Spring returns, battery backups and controls available with actuators

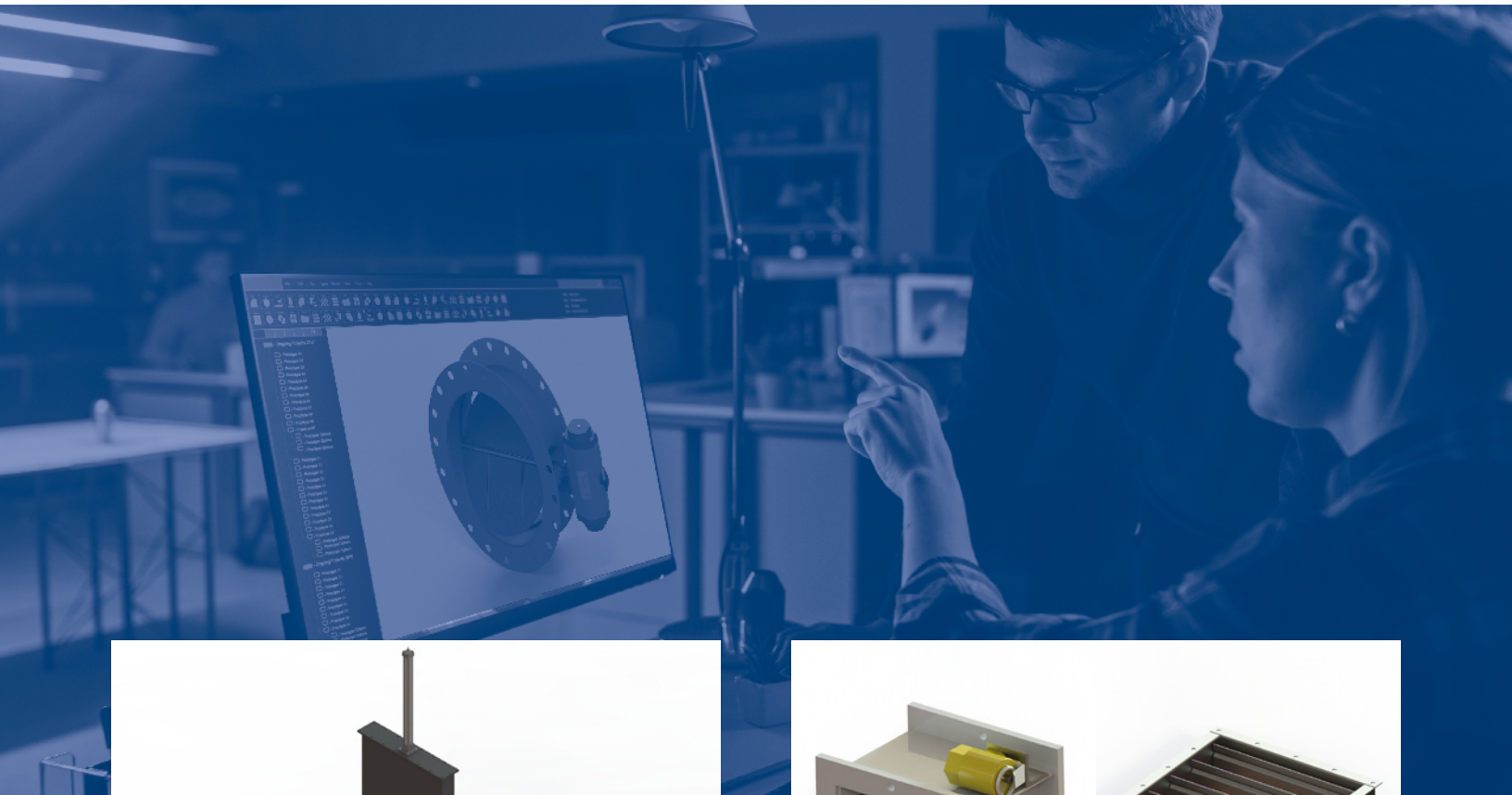


## TEE DAMPERS

Our Tee Dampers range in size from 10" to 52" pipes and are suitable for modulation, diversion, and isolation. Temperature ranges from ambient to 1500°F standard or options for up to 2200°F.

Options Include:

- Shutoff options from 90% to 99%
- Stainless or carbon steel construction
- Spring returns, battery backups and controls available with actuators

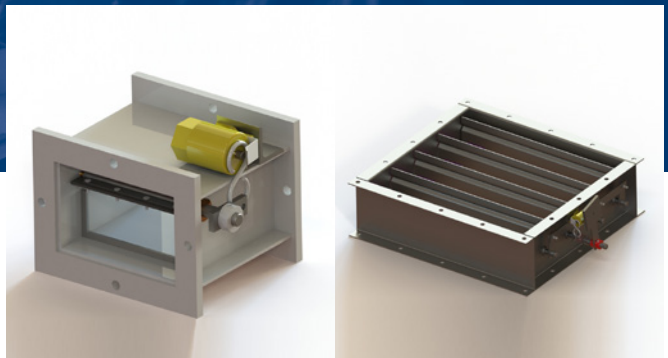


## SLIDE GATE DAMPERS

Slide Gate Dampers are meant to be used for diversion or isolation. Our dampers are available in sizes ranging from 10" to 72" and process temperatures up to 1000°F. They are available in round, square or rectangular configurations.

Options Include:

- Shutoff options of 98% or 99%
- Stainless or carbon steel construction
- Enclosed blade retraction area
- Manual, pneumatic or electric actuators



## SPECIALTY DAMPERS

Illinois Damper offers a number of other specialty dampers on a custom basis. Please contact the factory for additional information.

Examples Include:

- CO2 dampers
- Backdraft dampers
- Custom configurations
- Stack cap dampers
- Refractory lined dampers

# DAMPER ACCESSORIES

## ACTUATORS

We offer several types of actuators:

- Pneumatic
- Electric
- Air cylinders
- On/off, spring return, modulating



## POSITIONERS



## GEARS AND ACCESSORIES



## INSTRUMENTS

- Pressure instruments
- Temperature instruments
- Transmitters



## OTHER PRODUCTS OFFERED

- Spool sections
- Weather hoods
- Companion flanges
- Spare parts